

GP mount polar alignment

If you don't have Skysensor 2000 PC and want to polar align the GP mount use the following procedure.



1. Adjust the tripod legs until the bubble level on the left side of the mount is level.



2. Set the altitude graduation to the latitude of your location. My location has 38 degrees latitude.

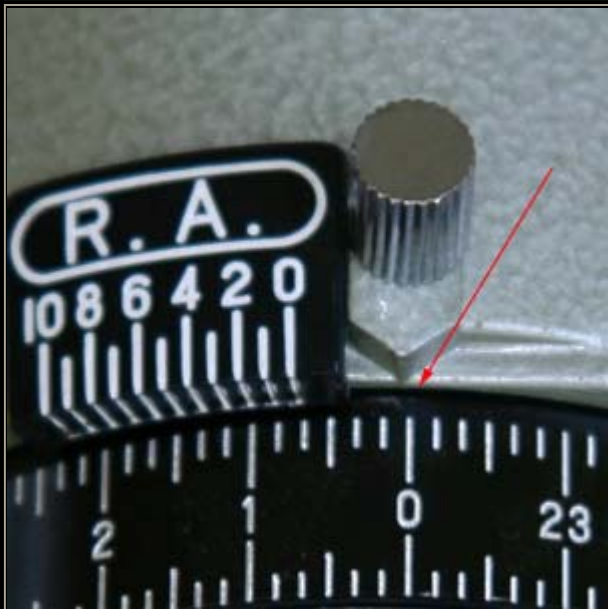
3. Find the difference between the longitude of your observing site and the standard time meridian for your zone. Set the difference on the time meridian offset scale. If your



observing site is located in the east set the E side graduation to the time meridian indicator. If your observing site is located in the west set the W side graduation to the time meridian indicator.

My observing site has longitude 22,93 degrees East. I divide this number with 15 degrees and I get 1,52. The time zone of my location is 2h East so: $1,52 - 2 = -0,47$ and $0,47 \times 15 \text{ degrees} = 7,07$

I set 7 degrees East on the time meridian offset scale.



4. Set "0" hour on the RA and hour graduation ring to the RA indicator after loosening the graduation ring setscrew. Retighten the graduation ring set screw. (The graduation ring set screw should be loosened when observing).

5. Unfasten the RA clamp and turn the telescope around the polar axis to set the observing date on the date graduation ring to the observing time



on the RA and hour graduation ring.

In this image it is,

observing date: 03
September (03/09)

observing time:
22:00 pm



6. Unfasten the DEC clamp and turn the OTA until it is nearly at right angles to the polar axis. Look through the polar axis scope and bring Polaris in the Polaris circle of the reticle by adjusting the azimuth and altitude of the mount.